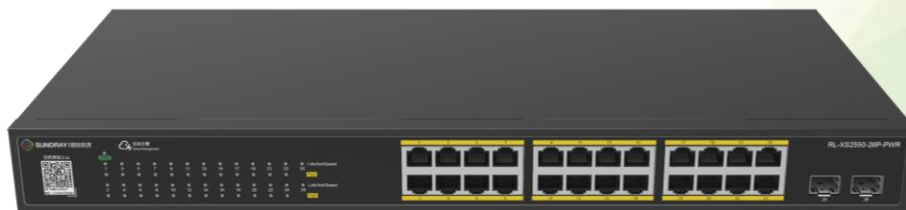


X-LINK SERIES

RL-XS2550-26PWR

RL-XS2550-26PWR is a lite manageable POE Switch independently developed by Sundray. The RL-XS2550-26PWR provides 24 10/100/1000Mbps POE ports and 2 Gigabit SFPs. It supports wire-speed forwarding on all ports, which can provide you with greater network flexibility. In combination with XMG or XRT Router, it can perform VLAN configuration, static MAC address binding, port isolation, loop detection, DHCP-SNOOPING, device reboot, etc. via Sundray Cloud, and it also supports device status monitoring in Sundray Cloud. Remote management and operation and maintenance are more convenient.

24 RJ45 ports with PoE power supply function, support IEEE802.3at/af standard, can be used as a Power over Ethernet device, can automatically detect and identify powered devices that meet the standard, and through the network cable for its power supply, no need to configure, plug-and-play, can be flexibly deployed in commercial stores, office network without the limitations of the layout of the power line to meet the small and medium-sized enterprises,, hotels network and wired access requirements.



RL-XS2550-26PWR

2 Technical Specifications



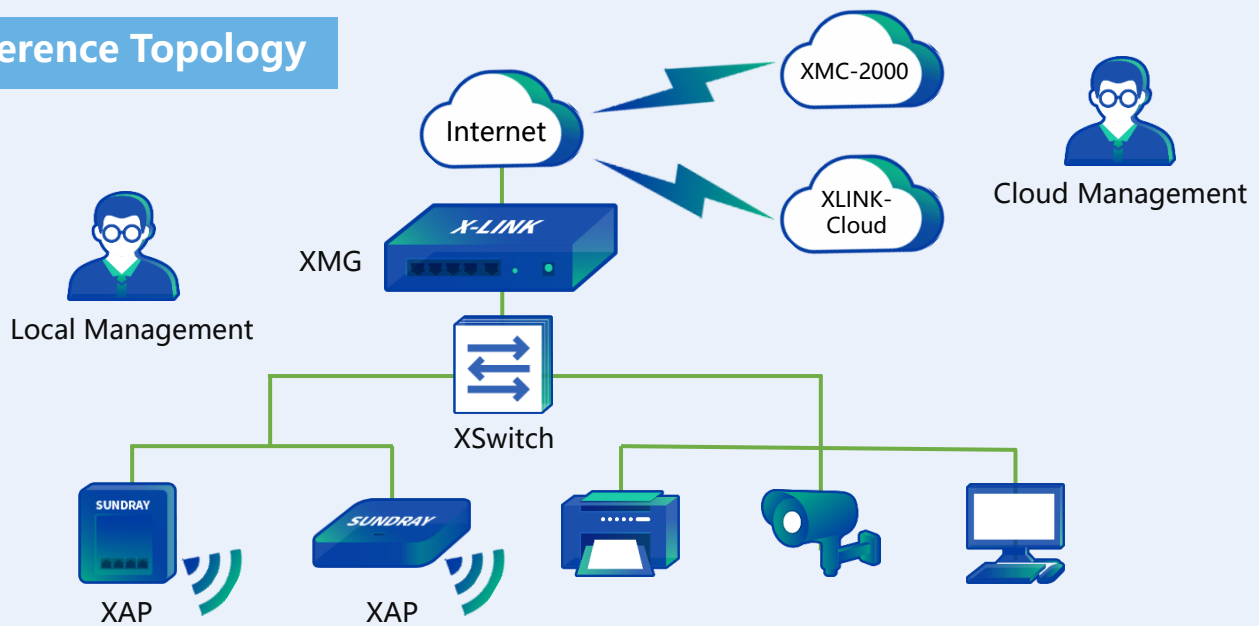
Product Specifications of SUNDRAY Lite Manageable Switch

Item	Description
Model	RL-XS2550-26PWR
Dimensions (mm)	440mm×208mm×44mm
Weight	2.12 Kg
Default Ports	24*10/100/1000Base-T POE ports, I IEEE802.3at/af standard, POE Budget 370W, 2*SFP Ports
Management Ports	1*Console
Power	Local Power Supply(220V/50Hz)
MAC Address Table	8K
Switch capacity	256Gbpsbps
Package forwarding rate	48Mpps
Work temperature Operating/storage humidity	Work temperature : 0°C ~ 45°C Storage temperature: -40°C ~ 70°C Work humidity: 5% ~ 90% RH, non-condensing
EEE	Support IEEE 802.3az standard EEE energy-saving technology: When EEE is enabled, the power consumption of the port at this stage is greatly reduced, achieving energy saving.
Security feature	Support DHCP Snooping Support port protection, isolation Support CPU protection
Network management	Support management with XMG/XRT via Sundray Cloud
Safety & EMC	Meet the standards of FCC, CE: EN55022, EN61000-3-2, EN61000-3-3, EN55024, EN60950-1,RoHS

3 Order Information

Model	Specifications	Remarks
RL-XS2550-26PWR	X-LINK Lite manageable Switch, support 2*SFP ports, 24 * 10/100/1000Base-T POE ports, IEEE802.3at/af standard, POE Budget 370W, Switching capacity 256Gbps, Forwarding rate 48Mpps. Local Power Supply(220V/50Hz)	Essential

Reference Topology



SANGFOR



SUNDRAY

Sundray Technologies Co., Ltd.

Add: Building A4, Nanshan i Park, No.1001 Xueyuan Road,
Nanshan District, Shenzhen, Guangdong Province, P. R.
China Post | Post Code: 518055

Service hot line:

Philippine Service Center Tel / Viber: +63 9171102171

Indonesia Service Center Tel / WhatsApp: +62 8111988110

Shen Zhen, China HQ service Center (Hotline in Chinese):

0086 - 75586953231

0086 - 75586957873

Web: www.sundray.com

www.sangfor.com

E-mail: sales@sundray.com

tech.support@sundray.com

Document Version: 20201127-V1.0

Copyright © 2020 Shenzhen Sundray Technologies Company Ltd. All rights reserved.

Disclaimer: Sundray Technologies retains the rights of final explanation and modification of this document and this statement